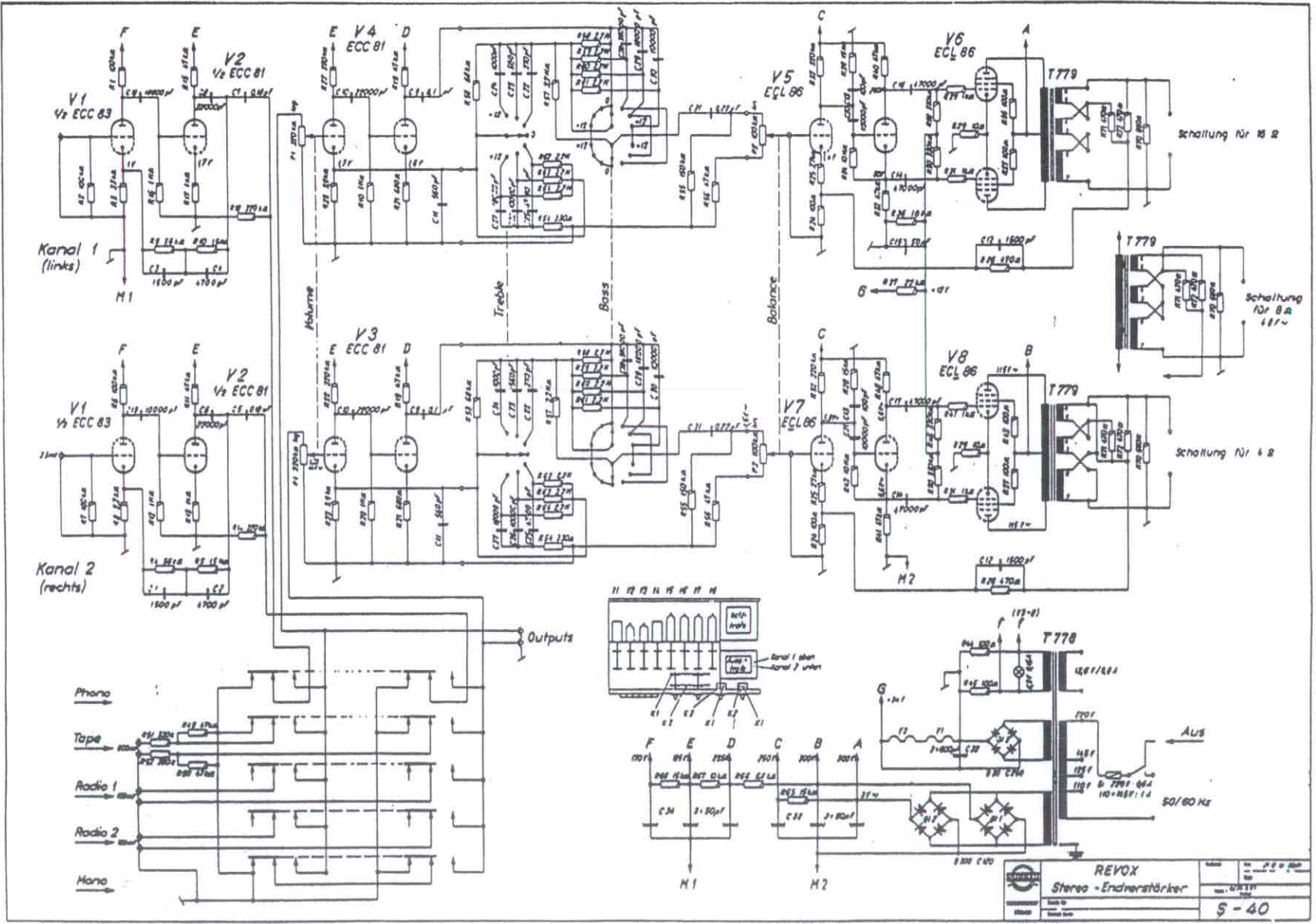
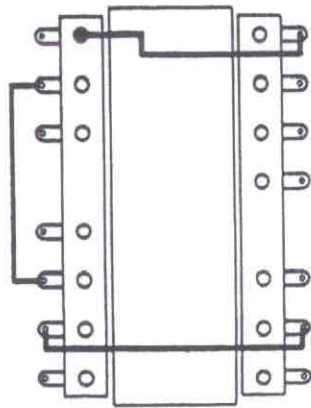


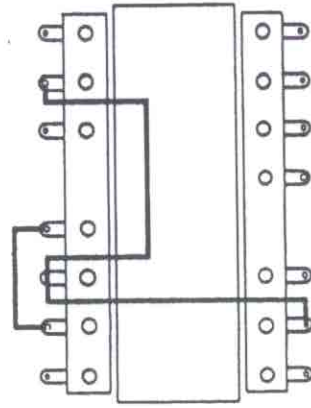
Specifications

Inputs:	PHONO (for magnetic or dynamic pickup)
	100 kOhm, asymmetrical, sensitivity 5 mV
	TAPE 300 kOhm, " " 1.2 V
	RADIO 1/2 220 kOhm, " " 150 mV
Outputs:	tape, 150 mV
	speaker, 4 / 8 / 16 Ohm, switchable
Phono equalization:	according to RIAA (see diagram)
"Bass" control:	7 stages of 4 db each at 50 cps; +12, +8, +4, 0, -4, -8, -12 db
"Treble" control:	7 stages of 4 db each at 10 kc; +12, +8, +4, 0, -4, -8, -12 db (adjustable frequency responses see diagram)
"Balance" control:	adjusting range 10 db
Frequency response:	30 to 20'000 cps $\begin{matrix} +0 \\ -1 \end{matrix}$ db, measured at radio input, bass and treble controls in position 0
Signal-to-noise ratio:	\geq 60 db for $N_a = 10$ watts, max. volume, inputs short-circuited
Crosstalk damping:	\geq 60 db, 50 to 15'000 cps, max. volume, inputs short-circuited
Output power:	10 watts each channel, peak 12.5 watts
Harmonic distortion:	\leq 0.5 % at 10 watts and 1000 cps (see diagram)
Power supply:	110, 125, 145, 220 V a.c., 50 - 60 cps
Power consumption:	about 80 watts
Tube complement:	1 x ECC 83, 3 x ECC 81, 4 x ECL 86
Overall dimensions:	15 ³ / ₈ in. wide, 10 ¹ / ₄ in. deep, 4 ¹ / ₄ in. high
Weight:	20 ¹ / ₄ lbs.

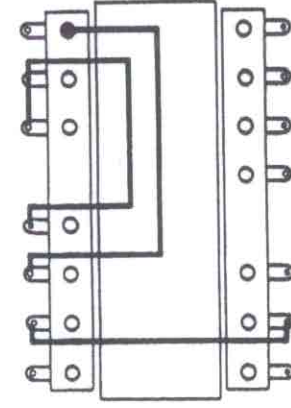




16 Ω



8 Ω



4 Ω